

# 145 GREENWOOD AVENUE, WYNCOTE, PA

9,933 Sq Ft Available

Divisible to 1,773 Sq Ft

**INTERIOR BUILDING  
RENOVATIONS COMPLETED**



## CREATIVE LOFT STYLE SPACE

**ONE BLOCK FROM THE  
JENKINTOWN TRAIN STATION**

Coworking, flex space  
and team rooms available.

Shared amenity space including lounge/dining area &  
outdoor patio/garden with seating.

Open space with lots of natural light, exposed wood  
framing, steel beams and stone walls.

Strategically located at the Jenkintown Train Station.  
SEPTA commuter rail service with the Doylestown,  
Warminster and West Trenton lines connecting to the Fern  
Rock Transportation Center & Center City Philadelphia;  
SEPTA commuter bus service with a stop at the site (Rt 77).

Excellent access throughout the Philadelphia region via  
Old York Rd (Rt 611), Township Line Road (Rt 73). The PA  
Turnpike (Rt 276) at the Fort Washington Interchange is a  
five (5) minute drive via Rt 309.

**Westfield** | Real  
Estate

For Leasing Information Contact:  
Marc Policarpo | 484-680-8013  
mpolicarpo@station-partners.com

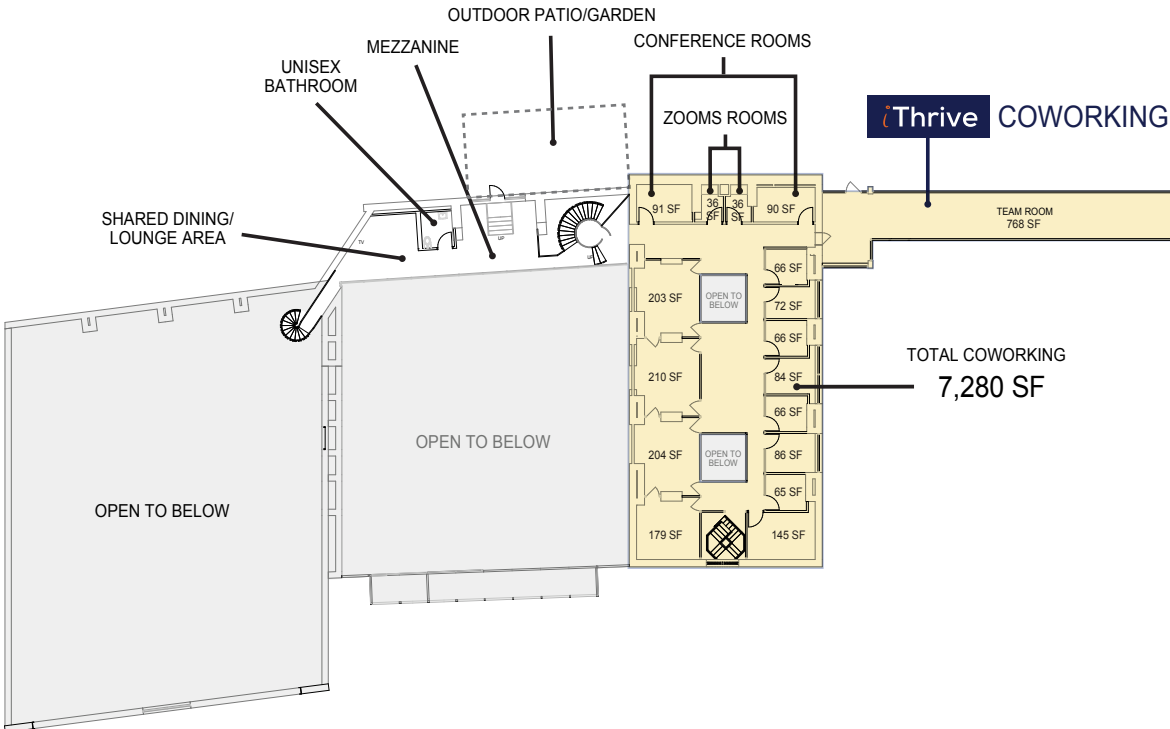
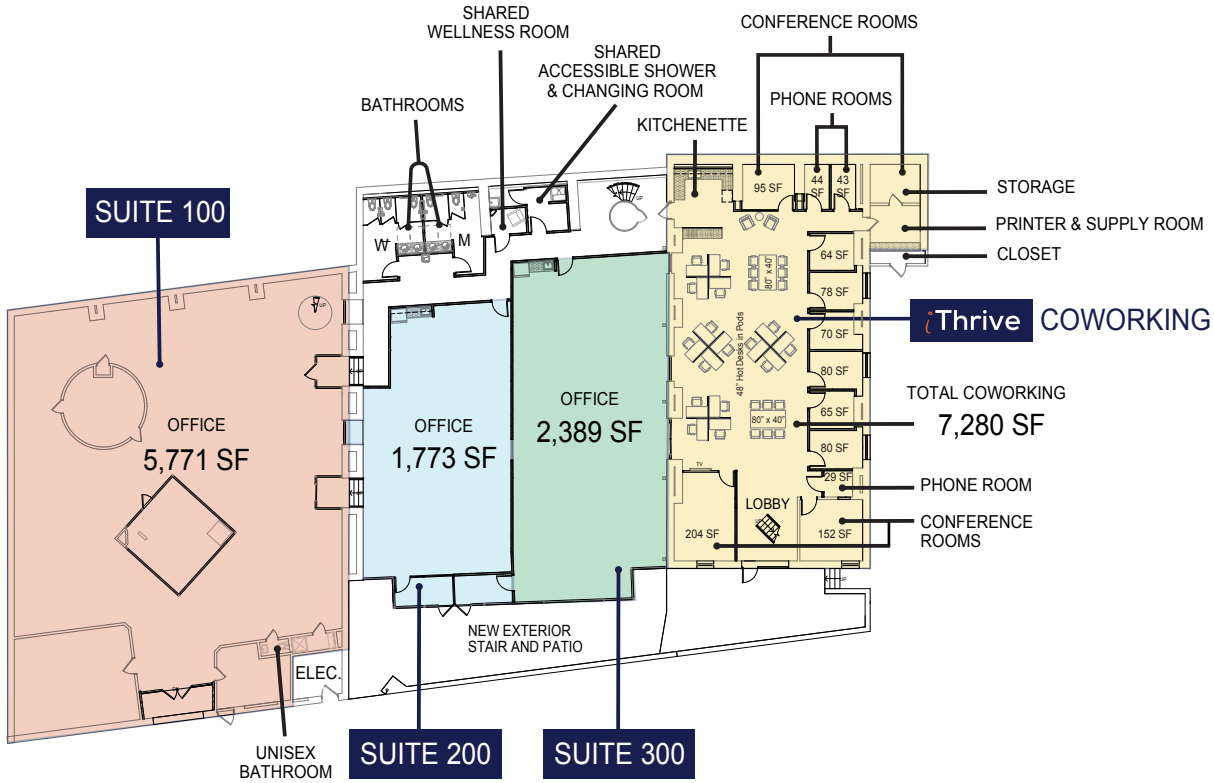
a project by.



**station**  
partners  
uncommon space

# 145 GREENWOOD AVENUE, WYNCOTE, PA

a project by station partners | stationpartners.com



For Leasing Information Contact:  
 Marc Policarpo | 484-680-8013 | mpolicarpo@westfield-re.com

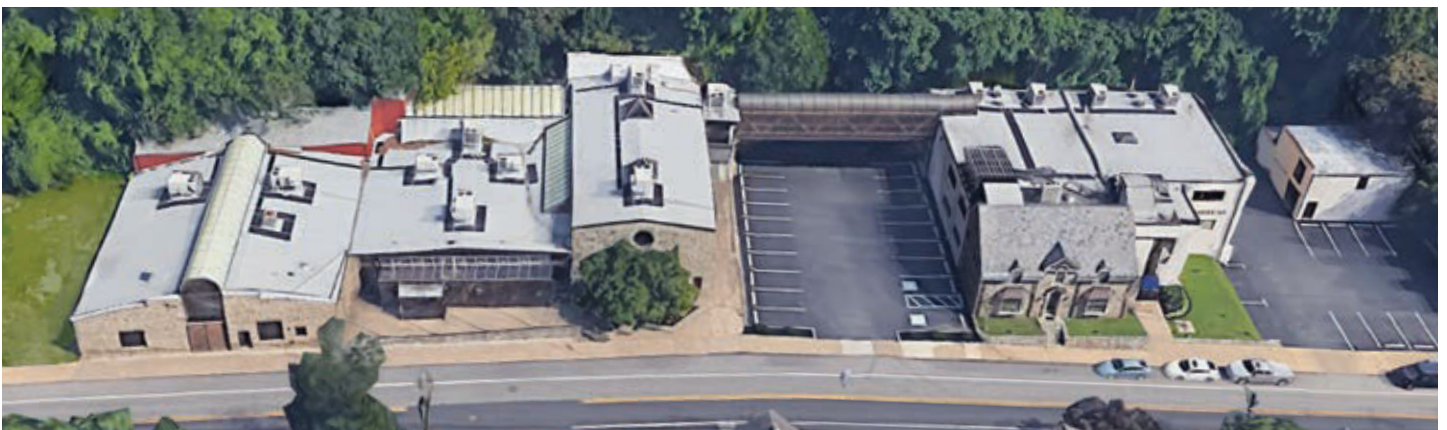
**Westfield** Real Estate



# 145 GREENWOOD AVENUE WYNCOTE, PA

a project by:

station  
partners  
uncommon space



For Leasing Information Contact:  
Marc Policarpo | 484-680-8013 | mpolicarpo@westfield-re.com

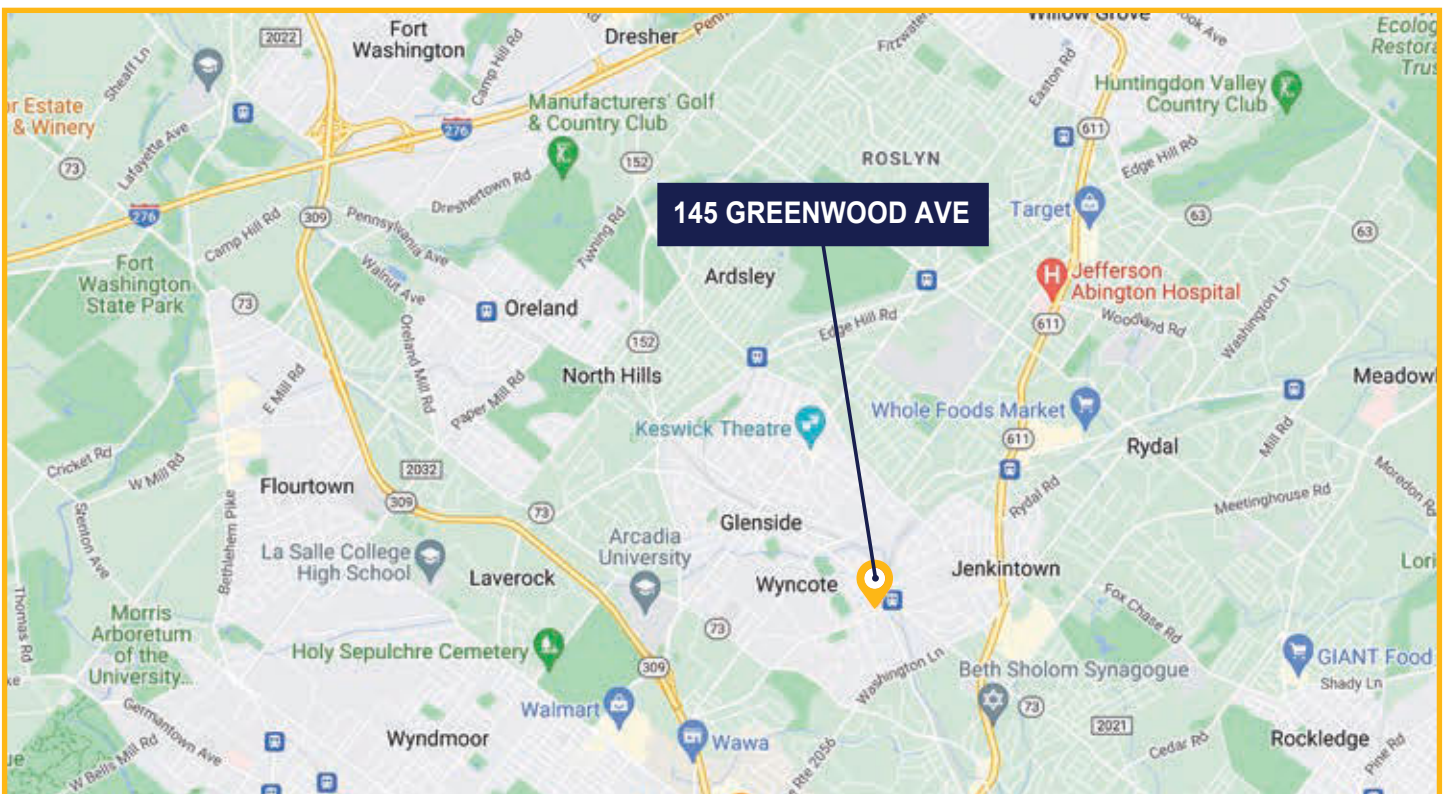
**Westfield** Real Estate



# 145 GREENWOOD AVE WYNCOTE, PA

a project by:

station  
partners  
uncommon space



For Leasing Information Contact:  
Marc Policarpo | 484-680-8013 | mpolicarpo@westfield-re.com

**Westfield** Real Estate